



**BLDE**  
**(DEEMED TO BE UNIVERSITY)**

Declared as Deemed-to-be-University u/s 3 of UGC Act, 1956

The Constituent College

SHRI. B. M. PATIL MEDICAL COLLEGE, HOSPITAL & RESEARCH CENTRE, VIJAYAPURA

BLDE (DU) /REG/B.Sc.(MIT)/2018-19/

May 17, 2018

**NOTIFICATION**

**Admission to B.Sc, Medical Imaging Technology (MIT) Course for 2018-19**

Applications are invited from the eligible candidates for admission to B.Sc., Medical Imaging Technology Course.

**Course Details:**

Sl. No.	Name of the Course	Eligibility	Duration	Intake	Fees	
1.	B.Sc.(MIT) Medical Imaging Technology	PUC Science	3 Years	15 per year	1 <sup>st</sup> Year	25,000/-
					2 <sup>nd</sup> Year	30,000/-
					3 <sup>rd</sup> Year	35,000/-

The Candidates desirous of seeking admission to the aforesaid course may download the application from the Deemed to be University website and submit the duly filled applications along with requisite documents accompanied with a crossed Demand Draft of Rs.500/- drawn in favor of **Registrar BLDE (Deemed to be University), Vijayapura, Karnataka**. It should reach to The Registrar, BLDE (Deemed to be University), Smt. Bangaramma Sajjan Campus, B. M. Patil Road, Vijayapura-586103. (Karnataka) on or before **10<sup>th</sup> July 2018**. Selection will be made on the merit basis of marks secured in the qualifying examination.

**Note:** For further details and updates log on to [www.bldeuniversity.ac.in](http://www.bldeuniversity.ac.in) or Contact to Ph: 08352-262770 Extn-2118, 2329.

REGISTRAR

..2

Smt. Bangaramma Sajjan Campus, B. M. Patil Road (Sholapur Road), Vijayapura - 586103, Karnataka, India.

BLDE (DU): Phone: +918352-262770, Fax: +918352-263303, Website: [www.bldeuniversity.ac.in](http://www.bldeuniversity.ac.in), E-mail:office@bldeuniversity.ac.in

College: Phone: +918352-262770, Fax: +918352-263019, E-mail: bmpmc.principal@bldeuniversity.ac.in



**BLDE**  
**(DEEMED TO BE UNIVERSITY)**

Declared as Deemed-to-be-University u/s 3 of UGC Act, 1956

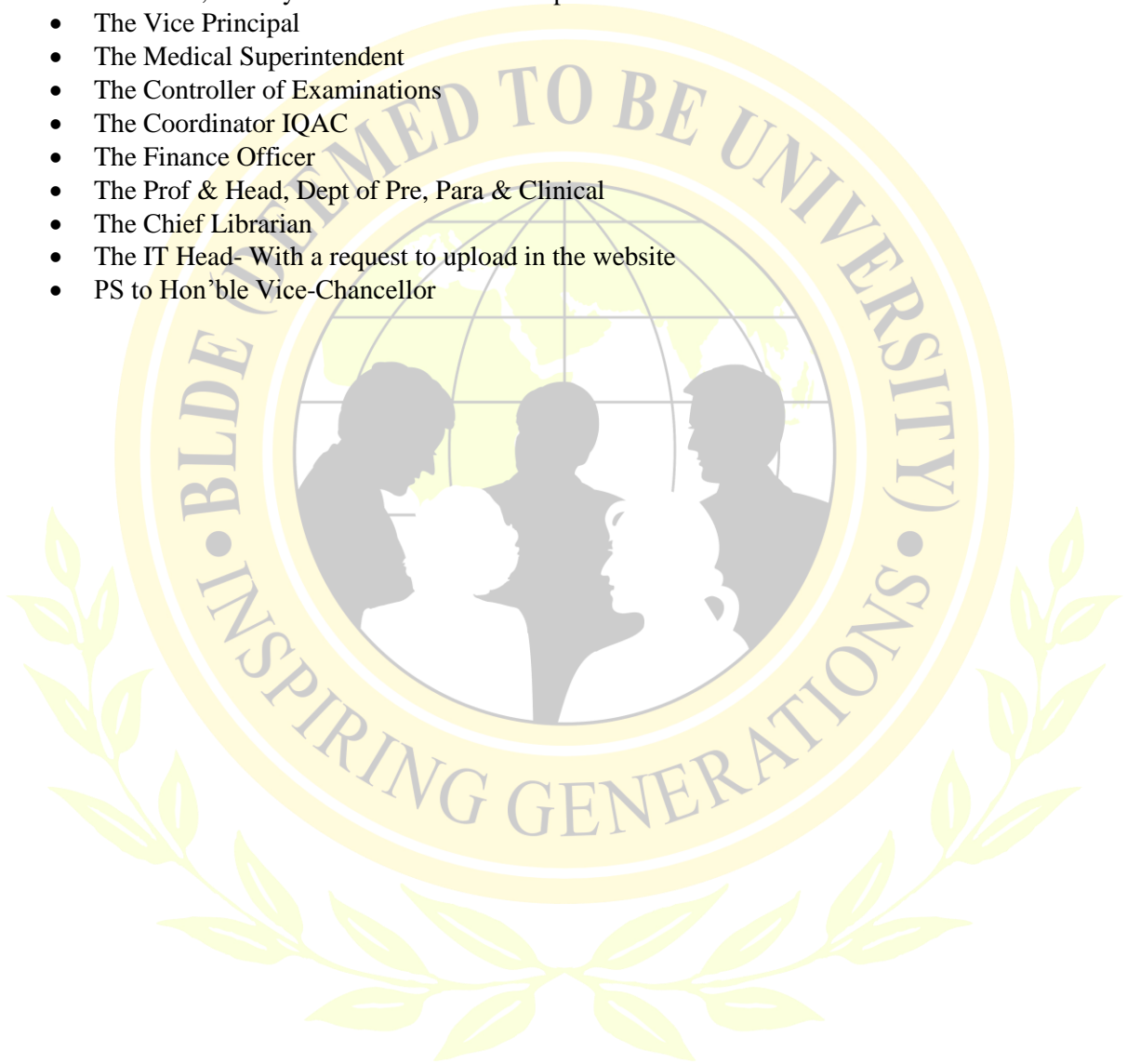
The Constituent College

SHRI. B. M. PATIL MEDICAL COLLEGE, HOSPITAL & RESEARCH CENTRE, VIJAYAPURA

-2-

Copy to:

- The Dean, Faculty of Medicine and Principal
- The Vice Principal
- The Medical Superintendent
- The Controller of Examinations
- The Coordinator IQAC
- The Finance Officer
- The Prof & Head, Dept of Pre, Para & Clinical
- The Chief Librarian
- The IT Head- With a request to upload in the website
- PS to Hon'ble Vice-Chancellor



Smt. Bangaramma Sajjan Campus, B. M. Patil Road (Sholapur Road), Vijayapura - 586103, Karnataka, India.

**BLDE (DU):** Phone: +918352-262770, Fax: +918352-263303, Website: [www.bldeuniversity.ac.in](http://www.bldeuniversity.ac.in), E-mail: [office@bldeuniversity.ac.in](mailto:office@bldeuniversity.ac.in)  
**College:** Phone: +918352-262770, Fax: +918352-263019, E-mail: [bmpmc.principal@bldeuniversity.ac.in](mailto:bmpmc.principal@bldeuniversity.ac.in)